

062614

NE COR., SEC 22, T18N, R68W

RECEIVED
LARAMIE COUNTY
CHEYENNE, WY.

CERTIFIED LAND CORNER RECORDATION

'89 OCT 5 PM 3 00

DESCRIPTION OF CORNER EVIDENCE FOUND, AND ORIGINAL RECORD (IF KNOWN)

FOUND ORIGINAL STONE, 2" DEEP, WITH \equiv CHISEL MARKS ON SOUTH FACE, η CHISEL MARKS EAST FACE. ALSO FOUND "WCCR" STONES SET BY COUNTY ROAD SURVEYOR, AND RECORDED IN COUNTY RECORDS. TIES VERIFY THE STONES POSITION.

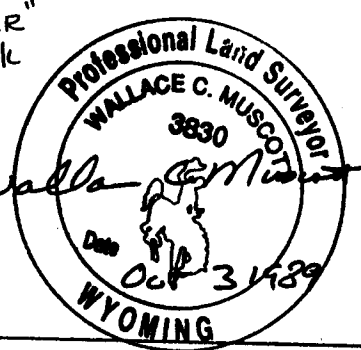
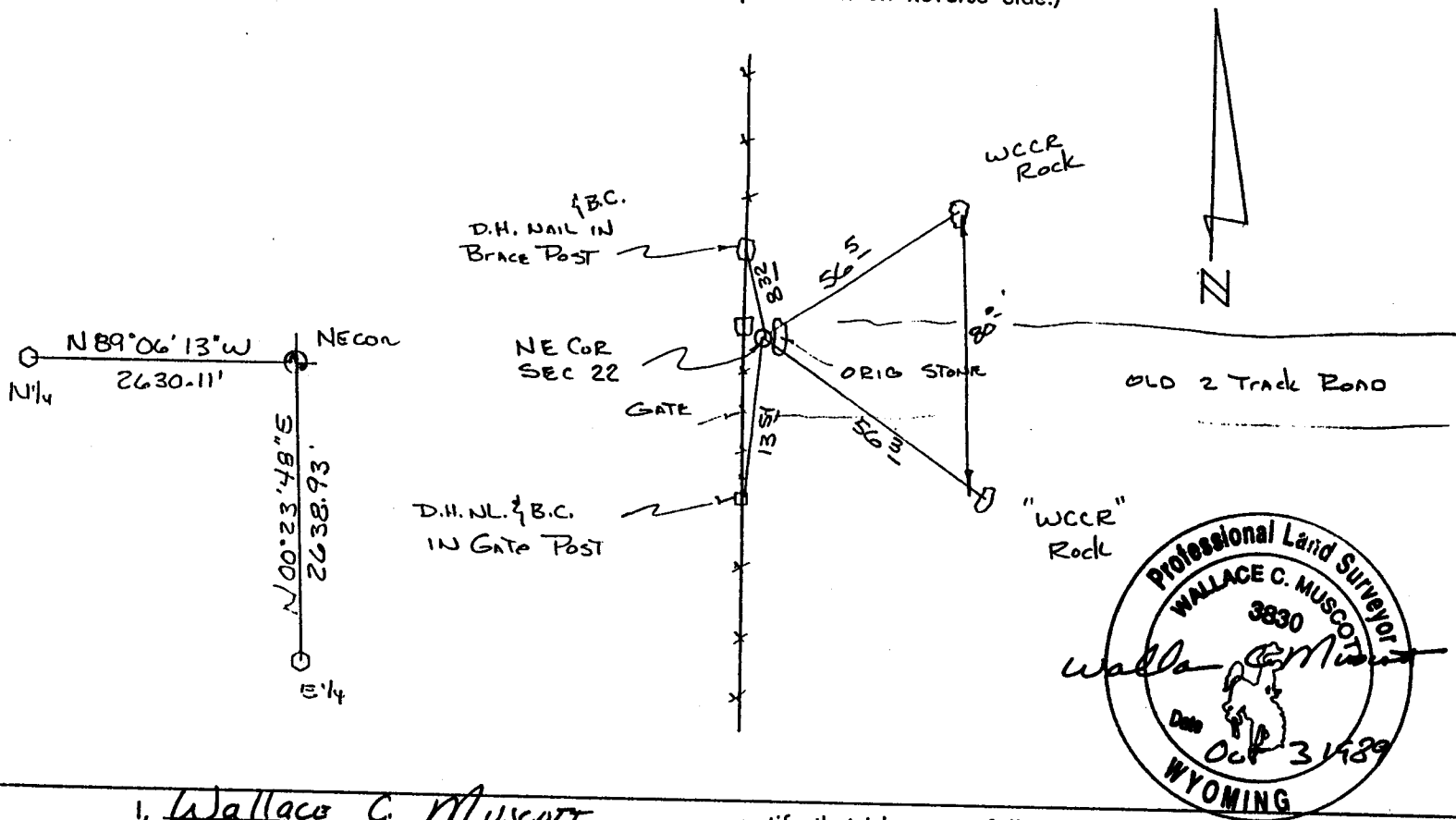
DESCRIPTION OF MONUMENT AND ACCESSORIES ESTABLISHED TO PERPETUATE THE ORIGINAL LOCATION OF THIS CORNER:

IN PLACE OF THE ORIGINAL CORNER STONE, SET A 5/8" X 30 REBAR W/ CORPS OF ENGINEERS BRASS CAP AT THE TOP STAMPED T18N, R68W
PLACED ORIGINAL STONE ALONG EAST SIDE
TIED OFF AS SHOWN BELOW.

S 15 S 14
S 22 S 23
1989

MAY 15, 1989

SKETCH, WITH COURSE AND DISTANCE TO ADJACENT CORNER IF DETERMINED IN THIS SURVEY. (May Sketch or Paste Reproduction on Reverse Side.)



I, Wallace C. Muscott certify that I have carefully performed or reviewed the work done on the diagrammed corner as reported on this recordation form and approve the same.

Wallace C. Muscott 3830
Signature of Surveyor Registration No.

STATE OF WYOMING,
Office of Clerk and Recorder,
County of _____

This "corner record" was filed for record on the _____ day of _____, 19____, was noted on the cross-index plat and is assigned page No. _____, in book No. _____.

County Official			
Cross Index No. <u>N-17</u>	T. <u>18N</u>	R. <u>68W.</u>	Mer.
_____	T. _____	R. _____	Mer.
_____	T. _____	R. _____	Mer.
_____	T. _____	R. _____	Mer.
_____	T. _____	R. _____	Mer.
_____	T. _____	R. _____	Mer.
_____	T. _____	R. _____	Mer.